

Installation(cont.)

Retrofit Installation

Note:It's class 2 constant driver, for risk of electric shock, The junction box need connect the "earth wire";

Step 1: Make sure the POWER is TURNED OFF in which you are installing the products;

Step 2: Choose CCT & lumens what's you want by dip switch (Fig. 1);

Step 3: If existing lamp and trim are present, remove from ceiling or move it out of the way as it will not be needed during installation. Measure the ceiling opening to make sure the edge of the luminaire will cover the entire hole and still sit firmly in the ceiling before proceeding; (Fig 2)

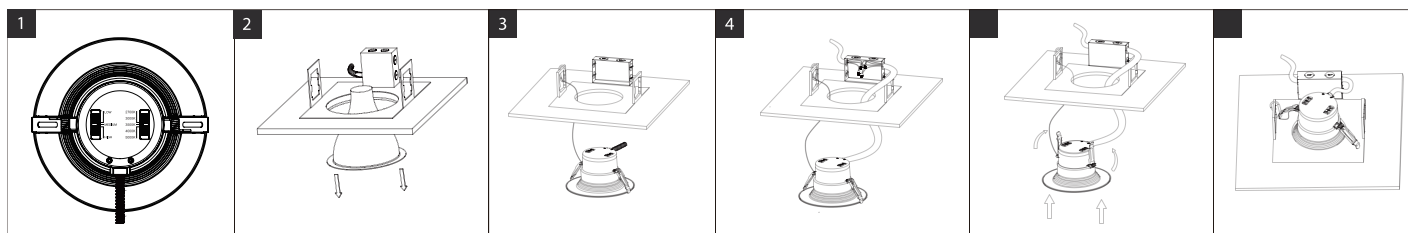
Step 4: Attach the carabiner safety clip to the existing fixture housing (Fig. 3)

Step 5: Insert lamp conduit into the J-box and wire to power source (black to hot, white to neutral, violet to 0-10V dimming positive, pink to 0-10V dimming negative) (Fig. 4). Reattach J-box cover when done;

Step 6: Squeeze the two housing clips so they are in an upright position and insert lamp into housing (Fig. 5);

Step 7: Once lamp is inside the housing, release the housing clips and continue pushing lamp into housing until securely fixed and flush with ceiling (Fig. 6);

Step 8: Restore power at the source and the installation is complete.



New Construction Installation

Note:It's class 2 constant driver, for risk of electric shock, The junction box need connect the "earth wire";

Step1: Make sure the POWER is TURNED OFF in which you are installing the product;

Step2: Choose CCT & lumens what's you want by dip switch(Fig.1);

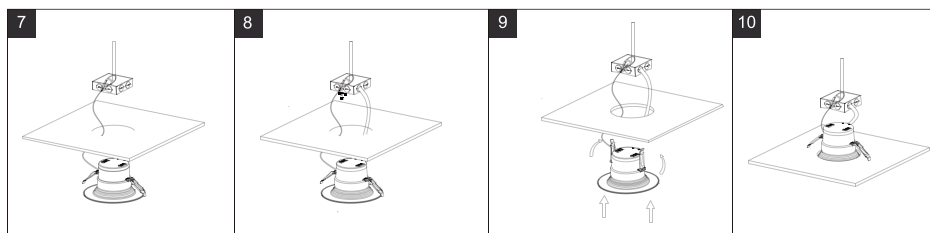
Step3: Attach the carabiner safety clip to the existing fixture housing (Fig.7)

Step4: Insert lamp conduit into the J-box and wire to power source (black to hot, white to neutral, violet to 0-10V dimming positive, pink to 0-10V dimming negative) (Fig. 8). Reattach J-box cover when done;

Step5: Squeeze the two housing clips so they are in an upright position and insert lamp into opening (Fig.9);

Step6: Once lamp is inside the opening, release the housing clips and continue pushing lamp into opening until securely fixed and flush with ceiling (Fig.10);

Step7: Restore power at the source and the installation is complete.



Changes or modifications to this unit not expressly approved by the party responsible for compliance could void the user's authority to operate the equipment.

NOTE: This equipment has been tested and found to comply with the limits for a Class B digital device, pursuant to Part 15 of the FCC Rules. These limits are designed to provide reasonable protection against harmful interference in a residential installation. This equipment generates, uses and can radiate radio frequency energy and, if not installed and used in accordance with the instructions, may cause harmful interference to radio communications. However, there is no guarantee that interference will not occur in a particular installation. If this equipment does cause harmful interference to radio or television reception, which can be determined by turning the equipment off and on, the user is encouraged to try to correct the interference by one or more of the following measures:

- Reorient or relocate the receiving antenna.
- Increase the separation between the equipment and receiver.
- Connect the equipment into an outlet on a circuit different from that to which the receiver is connected.
- Consult the dealer or an experienced radio/ TV technician for help.